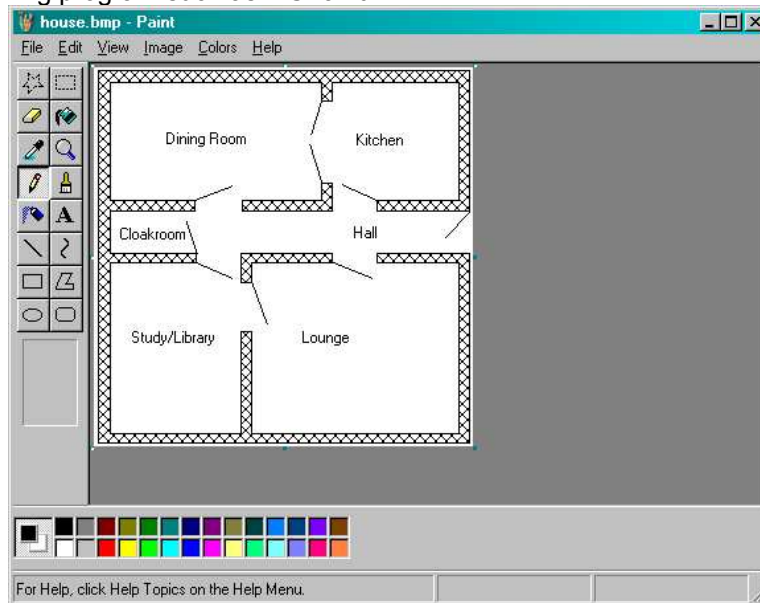


## How to enter Floor Plans into the Feng Shui Professional Program

### 1) How to create the Floor Plan

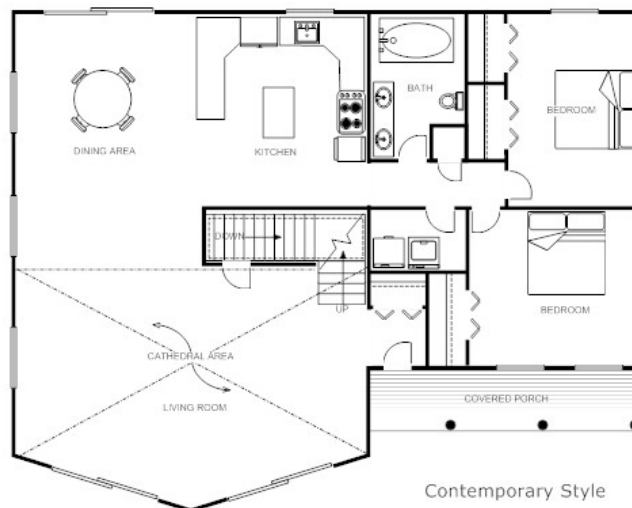
There are several ways to create the initial Floor Plan:

#### 1.1 Use a drawing program such as MSPaint:



Here the floor plan has been drawn using the basic Line and Text features of MSPaint, and has been saved as a bitmap (.bmp) file.

#### 1.2 Use a specialist Floor Plan tool (such as SmartDraw, Plan3D etc.)



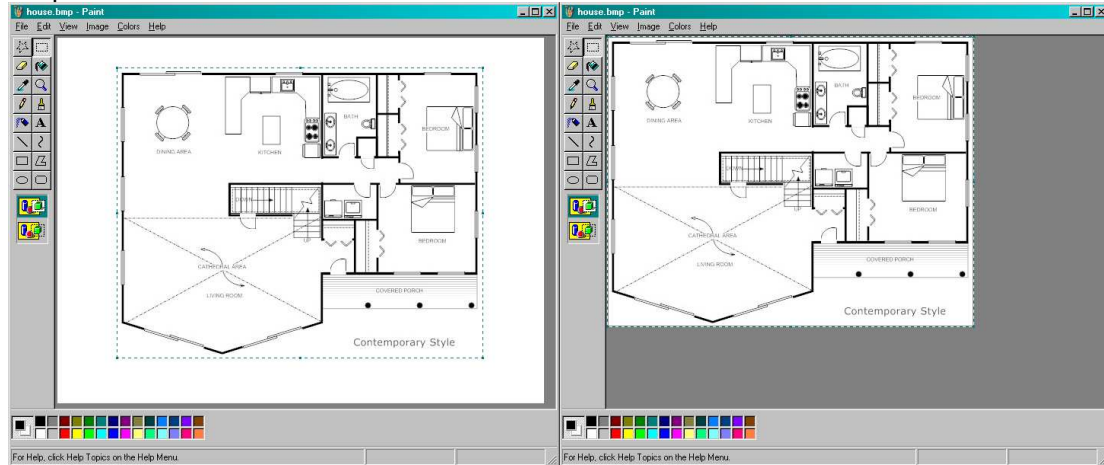
In this case the specialist program produces a detailed “architect” style picture – this can be saved as a JPEG (jpg) file.

#### 1.3 Scan a picture from another source

In this case you can use a Computer Scanner to scan a picture from a PDF file or from a printed page. This can be saved as a JPEG (jpg) or bitmap file.

## 2. Trimming the picture.

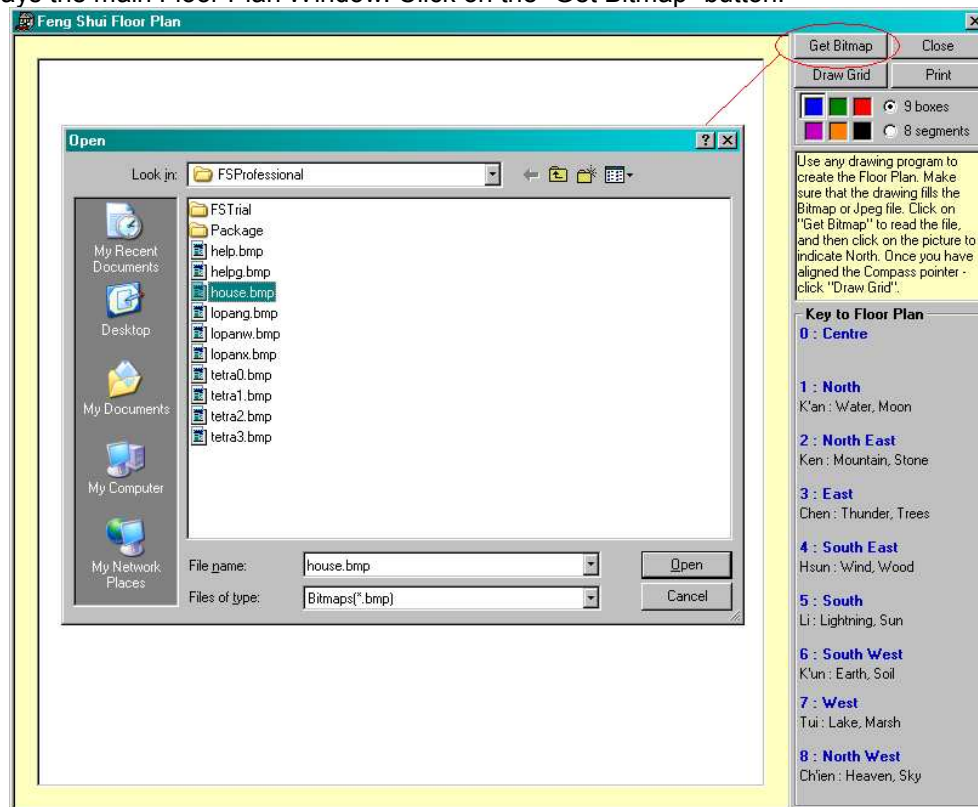
Once you have created your bitmap or JPEG file, you will need to “trim the file” so that the Feng Shui program can properly locate the Pa Kua. This is a simple procedure, using MSPaint. Simply open the file in MSPaint, and then using the “Select” tool, draw a boundary as close to the edge of the actual drawing as possible. Then click on the “Edit / Cut” menu to select this picture. Open a new copy of MSPaint and paste the picture in (making sure that the picture fills the screen).



You can now save this as your Floor Plan as a bitmap or JPEG.

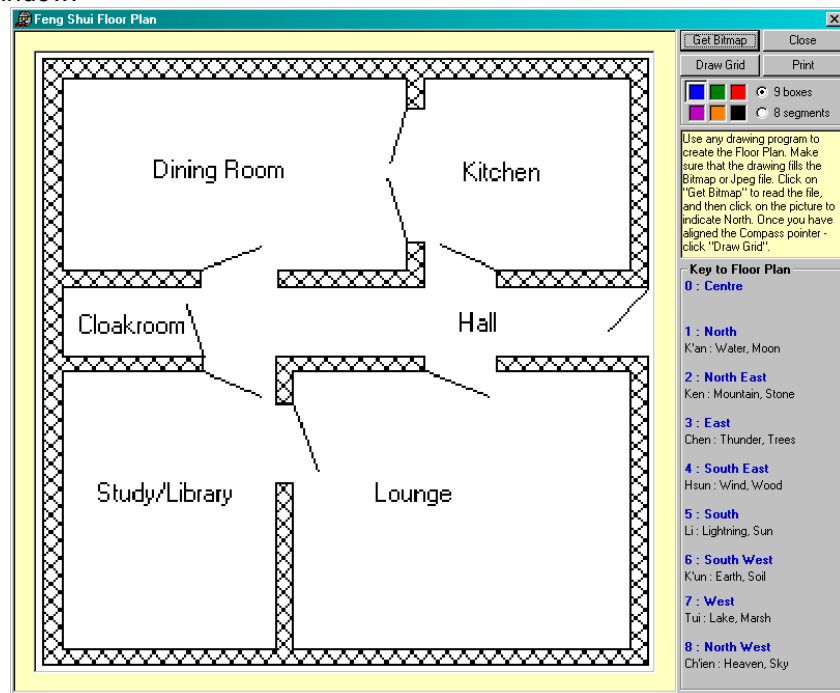
## 3. Opening the Floor Plan in the Feng Shui Program:

Open the Feng Shui program and select the “House” Icon on the left hand menu column. This displays the main Floor Plan Window. Click on the “Get Bitmap” button.



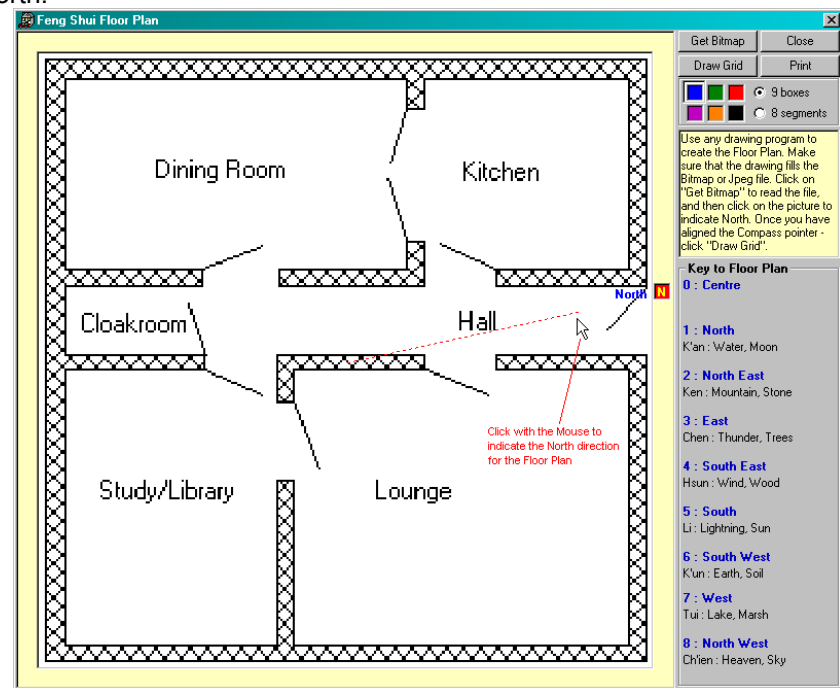
The “Open” dialog is displayed. Navigate to the directory that holds your picture. You may need to change the “Files of Types” pick list to “Jpeg files” instead of “bitmaps”.

Select the file and click on the “Open” button and the Floor Plan is displayed within the program window:

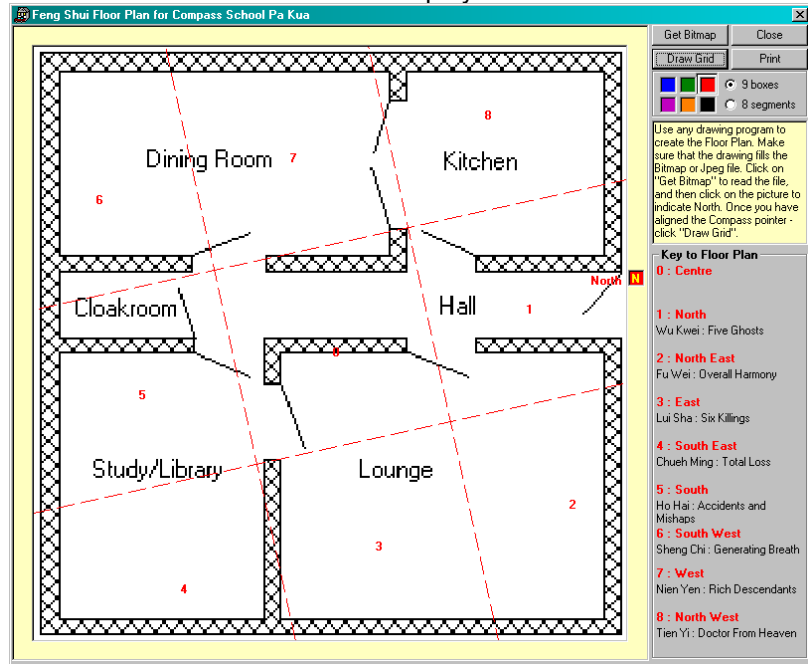


#### 4. Drawing the Pa Kua

First you need to indicate the direction of “North” for the selected Floor Plan. Just click with the Mouse anywhere on the picture so that a line from the centre of the Floor Plan is drawn towards North:

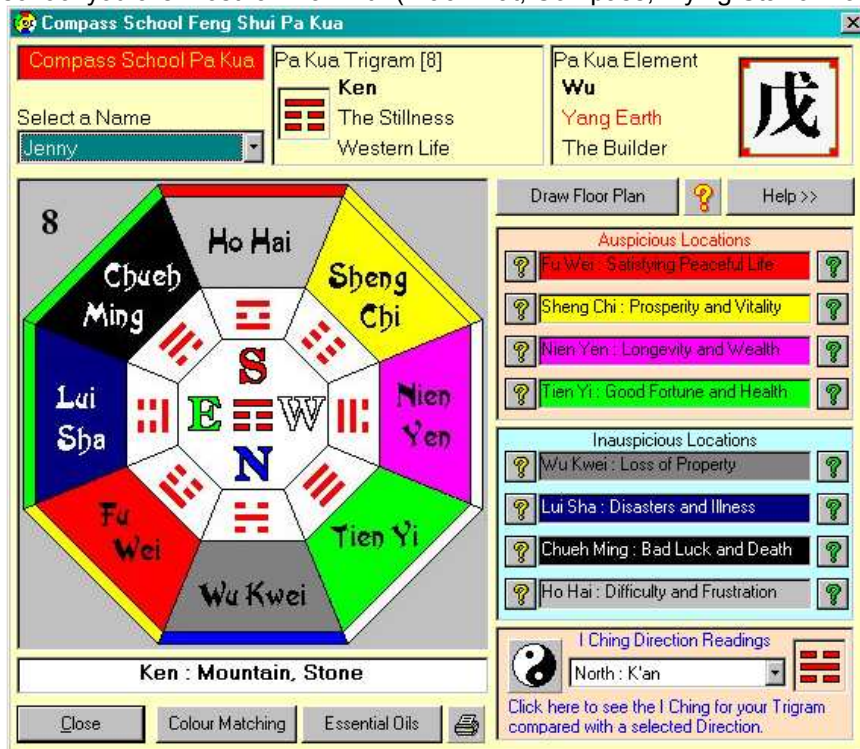


Finally, click on the “Draw Grid” button to display the Pa Kua for the selected direction:



You can now print this picture using the “Print” button to include in a report for your Client.

You can now use the main Feng Shui program to determine the best locations for the Client, using the school you are most familiar with (Black Hat, Compass, Flying Star or Lo Pan).



Above is an example using the Compass School.

**NOTE:** To display the appropriate Pa Kua details for the Compass School, you need to click on the “Draw Floor Plan” button within this window (or for Black Hat or Flying Star as appropriate), rather than using the “Floor Plan” Icon on the main screen.

You will then see the correct Key shown for the numbered locations within the Pa Kua.